

Blackminton®

The Magical Sporting Event



This guide will teach you about Blackminton®, the magical speed badminton night event from Speedminton®. It describes the most important aspects of setting up and holding a Blackminton® event.

If you plan to organize a Blackminton® event yourself, please contact us first. We'll be happy to help you with advice – and even active participation and equipment, if requested – to make sure your event is a success. Please get in touch with us. Of course, you can also book a complete event from us, or a full team, with all the equipment.

Sports and Party

Blackminton® is a magical Speedminton® sports party played under black light on glowing playing fields. It is a one-of-a-kind sporting event and an unforgettable experience for everyone involved. It is an eclectic mix of athletics and vibrant nightlife. The Speedminton® Speedlights (light sticks) give the Night Speeders a light green glow, making them shine even brighter under the black lighting; the Speeders look like shooting stars racing through the night. To help the players see each other better in the dark, they can make themselves up with fluorescent body paint and costumes, creating imaginative Blackminton Blackminton® characters. Booming music from a sound system elevates the mood, encouraging the players even more.

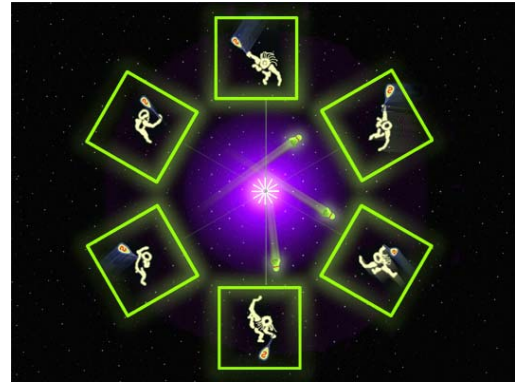
A daytime Speedminton® event can be continued into the night as a Blackminton® event. Even tournaments can be held as Blackminton® competitions.

Choosing the Right Location

Blackminton® can be played indoors or outdoors. You can play on tennis courts or wherever there is enough space to set up the fluorescent Speedminton® Easy Court playing fields. If you have enough space, you can also arrange the Easy Courts in a “Star Court” formation. The Star Court makes optimum use of the main black light source for several pairs of players. Of course, if you only have limited space, you can also set up the courts in a row, next to one another.

Very important: The darker the event location, the stronger the black light effects will be. Accordingly, avoid locations with many bright light sources (or switch them off if you can). Light sources within the players’ line of sight are a major distraction.

Areas with large insect populations are less than ideal for Blackminton®, because black light attracts bugs (but no mosquitos).



Space Requirements

Make sure to consider the fairly broad space requirements of speed badminton in general: a Speed Court is nearly 80 feet (24m) long, not including the service area from the back line. Therefore, the minimum length is around 85 feet (26m). To set up a Star Court, you need enough space to hold a circle with a diameter of at least 85 feet (26m). The recommended minimum height for playing Speedminton® is 23 feet (7m). Lower ceilings are only suitable for advanced players who play low strokes; but even experts will appreciate locations that permit high lobs.

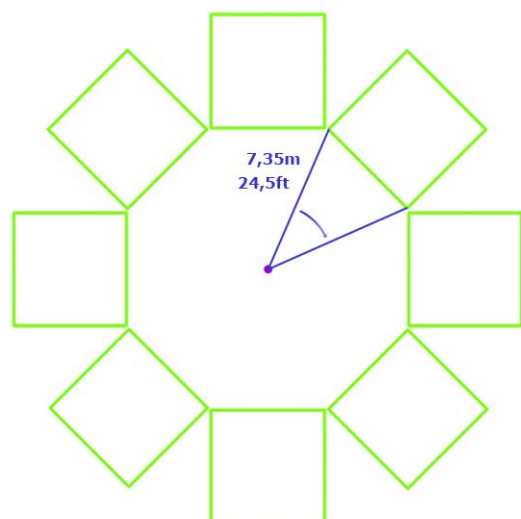
Speed badminton is more than a typical spectator sport. The first time people see it, they want to try it out themselves – so be sure to allow for enough playing fields at your event. Remember that only 2 players can play on a Speed Court at once, and set up as many courts as your event location allows. The people want to play, not wait!

Setup Manual for StarCourts with 8 fields

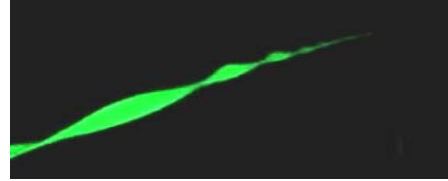
This StarCourt consists of eight square playing fields measuring 5,5m/18ft on each side. For the easy setup you just need four Speedminton® Easy Courts and a measuring tape with a minimum length of 7,5m/22ft.

The StarCourt for eight, installed at Blackminton® events, allows for an enhanced use of the blacklight source, located in the center. The eight fields of the resulting four Speed Badminton courts will be placed a little further away from each other than the standard distance of 12,8m/42ft. (The angle template, which is necessary for the StarCourt for six, will no longer be needed. The manual for setting up a starcourt for six players you can find here: www.speedminton.com/download/starcourtmanual.pdf

1. Attach the measuring tape to the center of the StarCourt.
2. Anchor the first corner of the playing field with a peg (or sand anchor plate, depending on your surface) **7,35m/24,5ft** away from the center. This will be the first corner of the first playing field (see diagram below).
3. To establish the position of the second corner of the first playing field, start by pulling the front line of the playing field firmly tight. Now use the measuring tape to determine the exact position of the second corner, which will also be **7,35m/24,5ft** away from the center.



4. Now the squared playing field can easily be completed to its backside. A tip for Blackminton®: twist the lines of the Easy Courts several times, before you anchor them, they will catch more light, when shaped like a spiral.
5. The rest of the courts you set up in the same manner. Important: Leave between two neighbouring corners a space of approx. 15cm/0,5ft. The courts can grow in size by approximately 1,5% when they absorb humidity of the environment. These spaces between the fields later allow to tension the lines again in case they get a little slack. In addition these gaps are needed to achieve an even distribution of the eight playing fields in their circle.



The Main Black Light Source



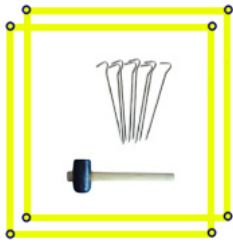
Blacklight Kits provide the black light for Blackminton® that turns the event location into a magical scene. The light sources are set up standing between the opposing playing fields, so their light shines equally on the players and the Speeders. The Speedminton® Blacklight Kits consist of up to 10 neon black lights, depending on the model. You should set up one Blacklight Kit for each Star Court or tennis court.

Event equipment can be rented and purchased from Speedminton®.

If you are trying to improvise your own Blacklight Kits, please get in touch with us, so we can give important advises.



Blackminton on Grassy Areas



A large grassy area, under the starry sky of a moonlit night, is an ideal Blackminton® location. You affix the Easy Courts to the ground using the included anchor pegs.



Blackminton® on Sandy Surfaces

Many players prefer soft sandy surfaces to play. Sand courts require special equipment to set up: Plastic sand anchor plates, available from Speedminton® upon request, can be used to anchor the corners of the Easy Courts.



Blackminton® in Indoor Tennis Facilities

Indoor tennis facilities are the perfect location for playing speed badminton, and offer ideal playing conditions for tournaments and championships, thanks to the lack of wind. While the Speedminton® rubberized line markers are enough to turn a tennis court into two Speed Courts, Blackminton® requires fluorescent line markers that glow under the black light. Two fluorescent Easy Courts from Speedminton® (four playing fields in total) fit perfectly onto the doubles markings of a tennis court. You can affix the corners to the floor with masking tape for the event. The tennis court lines will become invisible in the darkness. Lower or remove the net, if possible.

Tip: To increase the luminosity of the Easy Court line markers, twist them a couple of times into a spiral before you affix them to the ground. Winter event? - Make sure to think of the stationary spectators and set the room temperature accordingly.



Fluoro-Styling

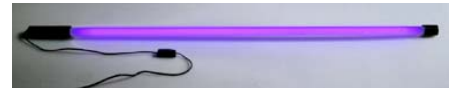
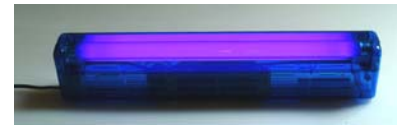
Blackminton® requires an area for fluoro-styling, where the players can dress in black light-active clothing or paint themselves with fluorescent make-up. If your event is intended as a spectator show, you should pay special attention to professional styling of the performers.

Your fluoro-styling area will need an extra black light source, to enable the artists to judge the “glow” effect while suiting up. Individual black light lamps to hang in changing rooms, as well as smaller lamps for make-up tables, are available from Speedminton®. We also have body-painting kits and several types of fluorescent textiles. Also popular are blinking LED location lights as body ornamentation – they also help you keep track of your opponent for playing speed badminton at night without black lighting.

When designing the body painting patterns, be sure to apply the paints generously and over wide areas. Remember, you are creating a whole new look for the players and their faces, which have to be visible from a distance.

The water-soluble fluorescent make-up washes off easily in the shower.

!!! Ingredients for styling: black lights, table, water, brushes, mirror, paper towels.
Optional: coat-hangers, portable tent (as dressing room)...



Racquet Loan, Info Stand, Presenters

Speed badminton is an entirely new sport that requires an introductory explanation. The spectators should be given a chance to try it out. Therefore, at larger events – and especially night events, we recommend lending out racquets (for a deposit) to your visitors. Your event staff should know enough about the world of speed badminton and Speedminton® to answer the guests' probing questions. At larger events, we recommend numbering the racquets visibly and keeping track of them with a check-out list. At past Speedminton® events, handy portable pavilion tents and simple beer garden furniture has proven sufficient – for both racquet loan and for “fluoro-styling” the players. Be sure to include space for these facilities.

You should try to encourage your visitors to try out the new sport, since the feeling of the game has to be experienced first hand – even though Blackminton® is a unique spectator experience in itself.

Music

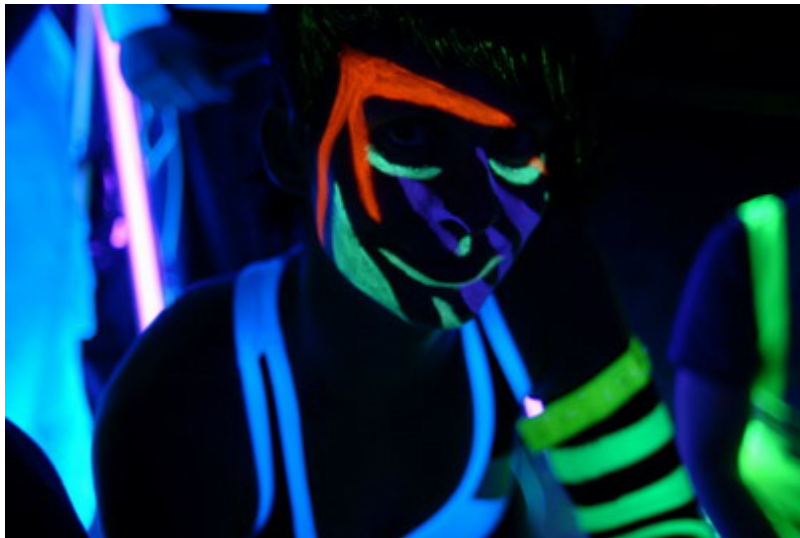
Blackminton® is a sports party – so you need a good sound system. For outdoor events, you should be able to get a permit from the authorities easily, as long as you don't bother the neighbors.

Working Lights

We recommend subdued lighting such as target mini-spots for the loan equipment stand, changing rooms, disc jockey, etc. We also suggest keeping flashlights handy during the event and in case you need to pack up in the dark. We recommend hands-free head flashlights.

Photography and Video

If you plan to make professional pictures or video of a night event, remember that flashes won't help! To capture the fluorescent black light subjects correctly, you should aim a black light source at the subject from the camera position. You may find it helpful to have long cables, as well as an assistant with a portable black light, as this will give the camera operator more freedom to move around. If you plan to invite TV teams to your event, we recommend using 400watts blacklight-guns for camera support. The additional camera blacklight should be carried handheld beside the camera by an extra person with others taking care about the cables. Conventional camera lighting or flash equipment dampens the black light effect, making the colors lose their intensity.



Promoting Your Event

As mentioned above, you can list your event on the Speedminton® home page, under Community -> Events and Dates.

If you need photos for your own flyers and posters, please contact us – we'd be happy to provide you with high-resolution material free of charge.

You can download our gecko and logo under Community, Download at www.speedminton.de.

We recommend collecting e-mail/snail mail addresses of interested parties, to keep them informed of events and tournaments. If you compile a mailing list, please send it to Speedminton® head office at events@speedminton.com, sorted by zip code (where applicable).

You can list your events on the Speedminton® web site www.speedminton.de under Community -> Events and Dates.

Event Materials

The Speedminton® range of racquets, speeders, and accessories is available at fine sporting goods shops everywhere. Retailers who feature Speedminton® products are listed under "Retailers" at the respective country web sites. You can also order from our web shop: www.speedminton-shop.de.

The event equipment mentioned above is available in a separate list, under www.speedminton.com/download/eventstuff-e.pdf. Nearly all the equipment is available for both rental and sale; after the event, you can decide whether you want to return the equipment or purchase it.

Have Fun with Blackminton®!

